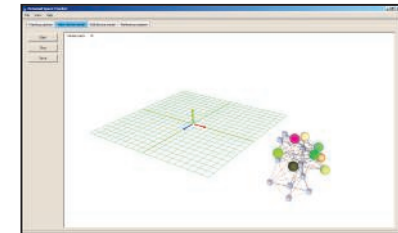
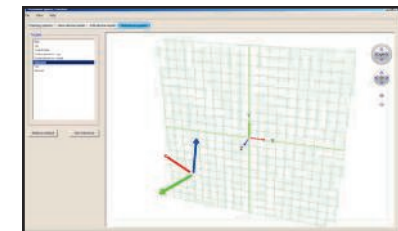
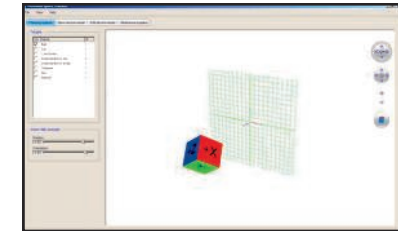


expandable area optical motion tracking, where each unit delivers full 6DOF tracking



- 40 cm up to 7 meters per unit
- Adjustable dynamic IR scene illumination
- Plug & play, easy to use
- Calibration free units
- Aligning multiple units in seconds
- Internal processing (no external processing needed)
- Highly accurate (< 1mm, < 1 deg.)
- Active and passive markers
- Multi object tracking
- Each unit delivers full 6 DOF tracking



Complete:

The WF PST is a complete motion tracking system and consist of a tracking unit, a starter set of markers, a pre trained interaction device, software and a manual.

A single unit delivers full tracking, two units offer the expansion of the tracked area.

expandable area optical motion tracking, where each unit delivers full 6DOF tracking

Mark train and interact

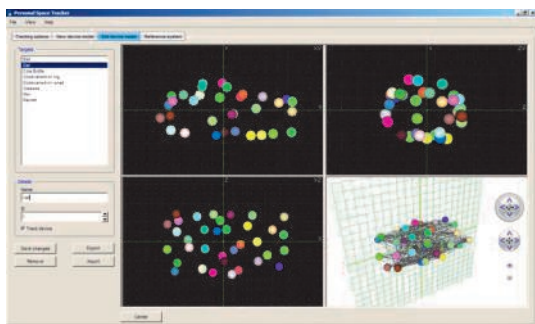
Transform arbitrary objects like cubes, pens, helmets, glasses and tennis rackets into tracked objects.



Tracking software

Easy to use application for new device training, aligning PST units, managing devices, origin definition and linking application.

A simple SDK allows you to bypass the standard interfaces and import the tracking data direct in your application.

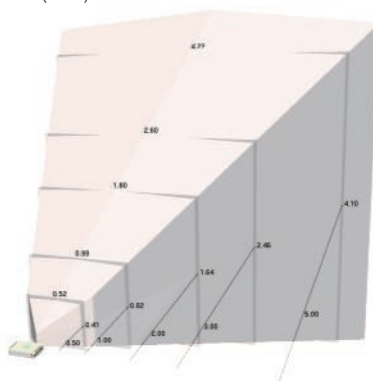


Technical data*

Refresh rate	55 Hz	Latency	Approx. 18 ms
Degrees of Freedom (DOF)	Single marker - 3DOF Device (min 4 markers) - 6DOF	Output	X,y,z, positional coordinates and orientation angles, rotation matrix or quaternions
Precision	< 1 mm < 1 deg	Markers	Passive (stickers and spheres) Active (led)
Tracked area	Expandable with the number of tracking units	Device creation	Simple procedure: mark device, let system learn new device in seconds and use.
Aligning units (tracking area setup)	Easy routine in seconds	Units needed for 6DOF tracking	One: each PST unit is a full 6DOF motion tracker.
Origin definition (reference point)	One click process	Set up	Plug and play
Calibration	Pre calibrated unit	Weight	Approx. 2 kg
Processing unit	Internal processing unit in each PST	Size	17.5 cm (d) x 5.5 cm (h) x 25 cm (w)
Multi object tracking	At least 15 different 6 DOF bodies and simultaneous head and object tracking	Power supply	Output 12V, 65W Input 100-240V, 50-60Hz
Client Operating systems	Windows and Linux	HW interface	Ethernet
Illumination	Dynamic and adjustable IR	SW interface	Standard VRPN and via simple SDK
Conditions of use	Indoor use		

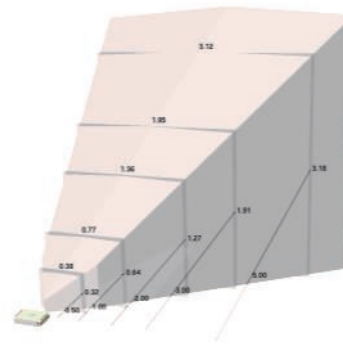
Options

Field of view (FOV) PST-WF-35: 3.5 mm lenses



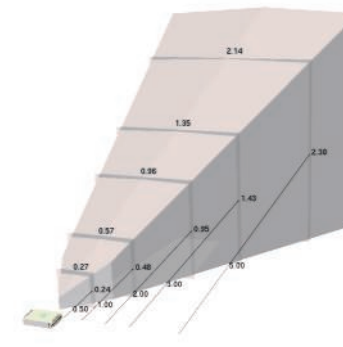
Working distance**
40cm — 3 m passive markers
40cm — 4 m active markers

Field of view (FOV) PST-WF-45: 4.5 mm lenses



Working distance**
40cm — 4 m passive markers
40cm — 5 m active markers

Field of view (FOV) PST-WF-60: 6.0 mm lenses



Working distance**
40cm — 5 m passive markers
40cm — 7 m active markers

* preliminary specifications, specifications are subject to change without notice
** depending marker size and size tracked object